

Han 16B-HMC-g-R

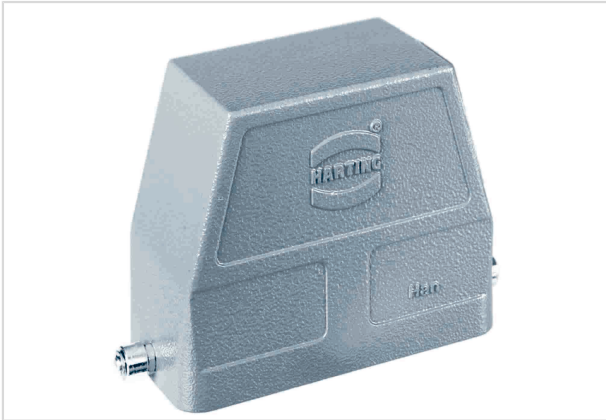


Image is for illustration purposes only. Please refer to product description.

Part number	09 30 216 0803
Specification	Han 16B-HMC-g-R
HARTING eCatalogue	https://b2b.harting.com/09302160803

Identification

Category	Hoods/Housings
Series of hoods/housings	Han [®] HMC
Type of hood/housing	Hood
Type	High construction

Version

Size	16 B
Version	Without cable entry
Locking type	Single locking lever
Field of application	Special hoods and housings for high mating cycles

Technical characteristics

Limiting temperature	-40 ... +125 °C
Note on the limiting temperature	For use as a connector according to IEC 61984.
Mating cycles with other HMC components	≥10,000
Degree of protection acc. to IEC 60529	IP65
Type rating acc. to UL 50 / UL 50E	4 4X 12

Material properties

Material (hood/housing)	Aluminium die-cast
Surface (hood/housing)	Powder-coated
Colour (hood/housing)	RAL 7037 (dust grey)



Pushing Performance
Since 1945

Material properties

RoHS	compliant
ELV status	compliant
China RoHS	e
REACH Annex XVII substances	Not contained
REACH ANNEX XIV substances	Not contained
REACH SVHC substances	Not contained
California Proposition 65 substances	Yes
California Proposition 65 substances	Nickel
Fire protection on railway vehicles	EN 45545-2 (2020-08)
Requirement set with Hazard Levels	R1 (HL 1-3) R7 (HL 1-3)

Specifications and approvals

Approvals	DNV GL
-----------	--------

Commercial data

Packaging size	1
Net weight	236.5 g
Country of origin	Germany
European customs tariff number	85389099
GTIN	5713140048461
eCl@ss	27440202 Shell for industrial connectors